



HOME TOWN
Center

579 WORCESTER STREET
NATICK, MASSACHUSETTS

RARE OPPORTUNITY
TO JOIN THIS
SPECTACULAR
HOME DESIGN LINEUP

ROUTE 9 FRONTAGE!

405 COCHITUATE ROAD | SUITE 301 | FRAMINGHAM, MA 01701 | PH: 508.405.1918 | FX: 508.405.1931 | WWW.SRARETAIL.COM

ALL INFORMATION CONTAINED HEREIN WAS OBTAINED FROM SOURCES DEEMED RELIABLE. NO WARRANTIES OR REPRESENTATIONS, EXPRESS OR IMPLIED, ARE MADE REGARDING THE ACCURACY OF THE INFORMATION CONTAINED HEREIN AND SUCH INFORMATION IS SUBMITTED SUBJECT TO ERRORS, OMISSIONS, PRIOR LEASE ASSIGNMENT, SUBLEASE, AND/OR WITHDRAWAL WITHOUT NOTICE. ALL SCHEMATIC DRAWINGS ARE FOR CONCEPTUAL PURPOSES ONLY! ALL DIMENSIONS, EASEMENTS, BUILDING CONFIGURATIONS, FEATURES, BOUNDARY, ROAD, AND TOPOGRAPHIC LINES ARE ASSUMED TO BE CORRECT, BUT ARE SUBJECT TO VERIFICATION. ALL LOGOS AND TRADEMARKS REMAIN THE PROPERTY OF THEIR RESPECTIVE OWNERS.

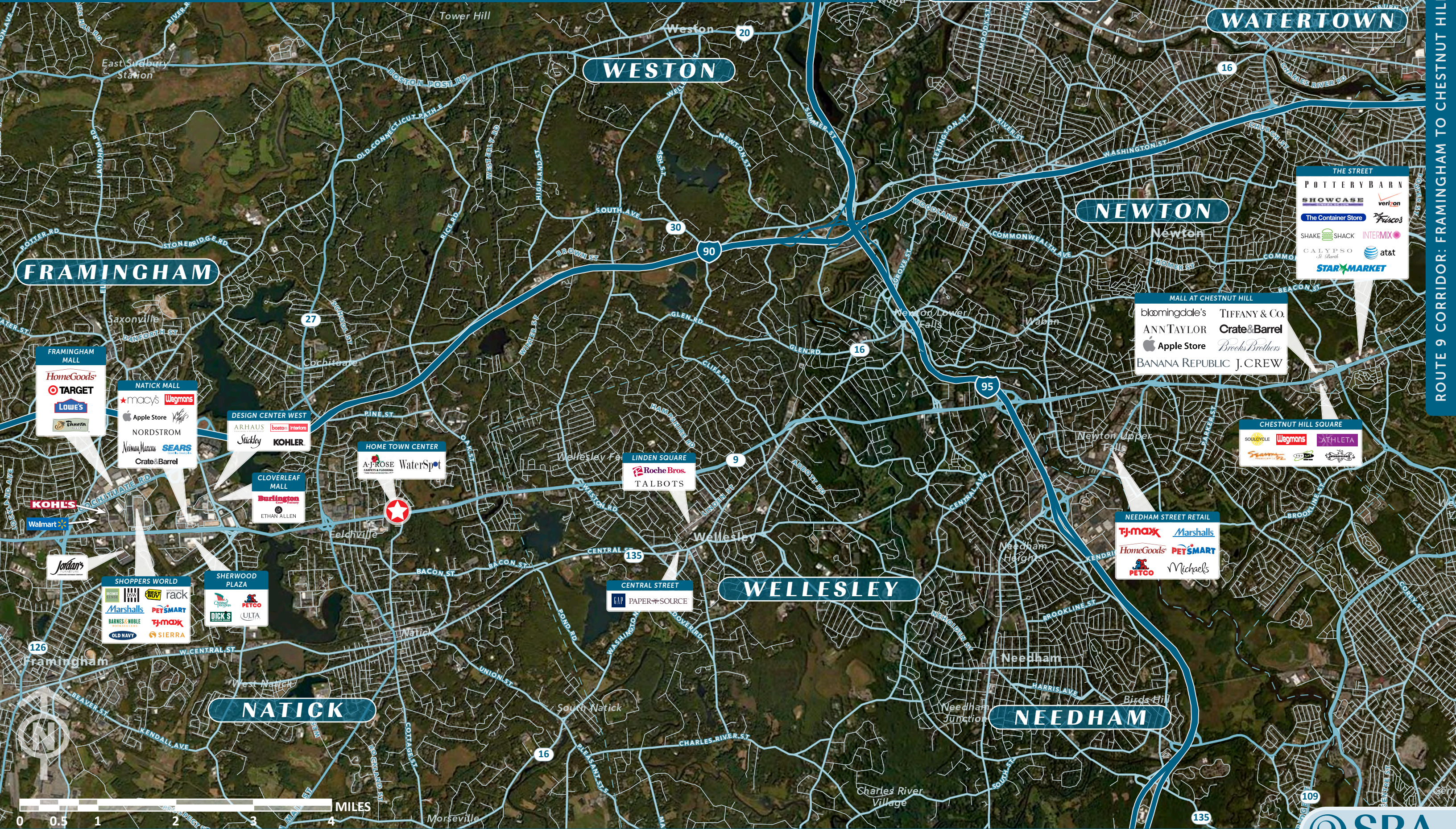


UPDATED: OCTOBER 2024

ROUTE 9 CORRIDOR

FRAMINGHAM TO CHESTNUT HILL, MASSACHUSETTS

AERIAL



ROUTE 9 CORRIDOR: FRAMINGHAM TO CHESTNUT HILL

FRAMINGHAM

WESTON

WALTHAM

WATERTOWN

NEWTON

WELLESLEY

NATICK

NEEDHAM

FRAMINGHAM MALL
HomeGoods
TARGET
Lowe's
Panera

NATICK MALL
macy's
Wegmans
Apple Store
NORDSTROM
Neiman Marcus
SEARS
Crate&Barrel

DESIGN CENTER WEST
ARHAUS
boston Interiors
Sticky
KOHLER

HOME TOWN CENTER
A-J-ROSE
WaterSpot

LINDEN SQUARE
Roche Bros.
TALBOTS

CLOVERLEAF MALL
Burlington
ETHAN ALLEN

KOHL'S
Walmart

Jordan's

SHOPPERS WORLD
HomeSense
BESY
rack
Marshall's
PETSMART
BARNES & NOBLE
TJ-maxx
OLD NAVY
SIERRA

SHERWOOD PLAZA
Dick's
PETCO
ULTA

CENTRAL STREET
GAP
PAPER SOURCE

NEEDHAM STREET RETAIL
TJ-maxx
Marshall's
HomeGoods
PETSMART
PETCO
Michaels

CHESTNUT HILL SQUARE
SOLARCOLE
Wegmans
ATHLETA
Spartan
Spartan

MALL AT CHESTNUT HILL
bloomingdale's
ANN TAYLOR
Apple Store
BANANA REPUBLIC
Tiffany & Co.
Crate&Barrel
Brooks Brothers
J.CREW

THE STREET
POTTERY BARN
SHOWCASE
The Container Store
SHAKE SHACK
GALYPSO
STAR MARKET
verizon
De Fisco's
INTERMIX
at&t



405 COCHITUATE ROAD | SUITE 301 | FRAMINGHAM, MA 01701 | PH: 508.405.1918 | FX: 508.405.1931 | WWW.SRARETAIL.COM

ALL INFORMATION CONTAINED HEREIN WAS OBTAINED FROM SOURCES DEEMED RELIABLE. NO WARRANTIES OR REPRESENTATIONS, EXPRESS OR IMPLIED, ARE MADE REGARDING THE ACCURACY OF THE INFORMATION CONTAINED HEREIN AND SUCH INFORMATION IS SUBMITTED SUBJECT TO ERRORS, OMISSIONS, PRIOR LEASE ASSIGNMENT, SUBLEASE, AND/OR WITHDRAWAL WITHOUT NOTICE. ALL SCHEMATIC DRAWINGS ARE FOR CONCEPTUAL PURPOSES ONLY! ALL DIMENSIONS, EASEMENTS, BUILDING CONFIGURATIONS, FEATURES, BOUNDARY, ROAD, AND TOPOGRAPHIC LINES ARE ASSUMED TO BE CORRECT, BUT ARE SUBJECT TO VERIFICATION. ALL LOGOS AND TRADEMARKS REMAIN THE PROPERTY OF THEIR RESPECTIVE OWNERS.



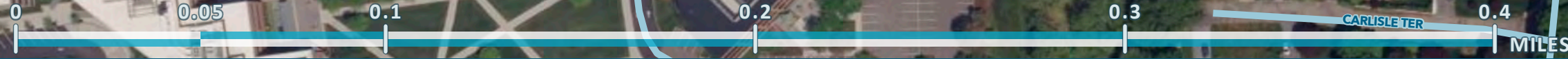
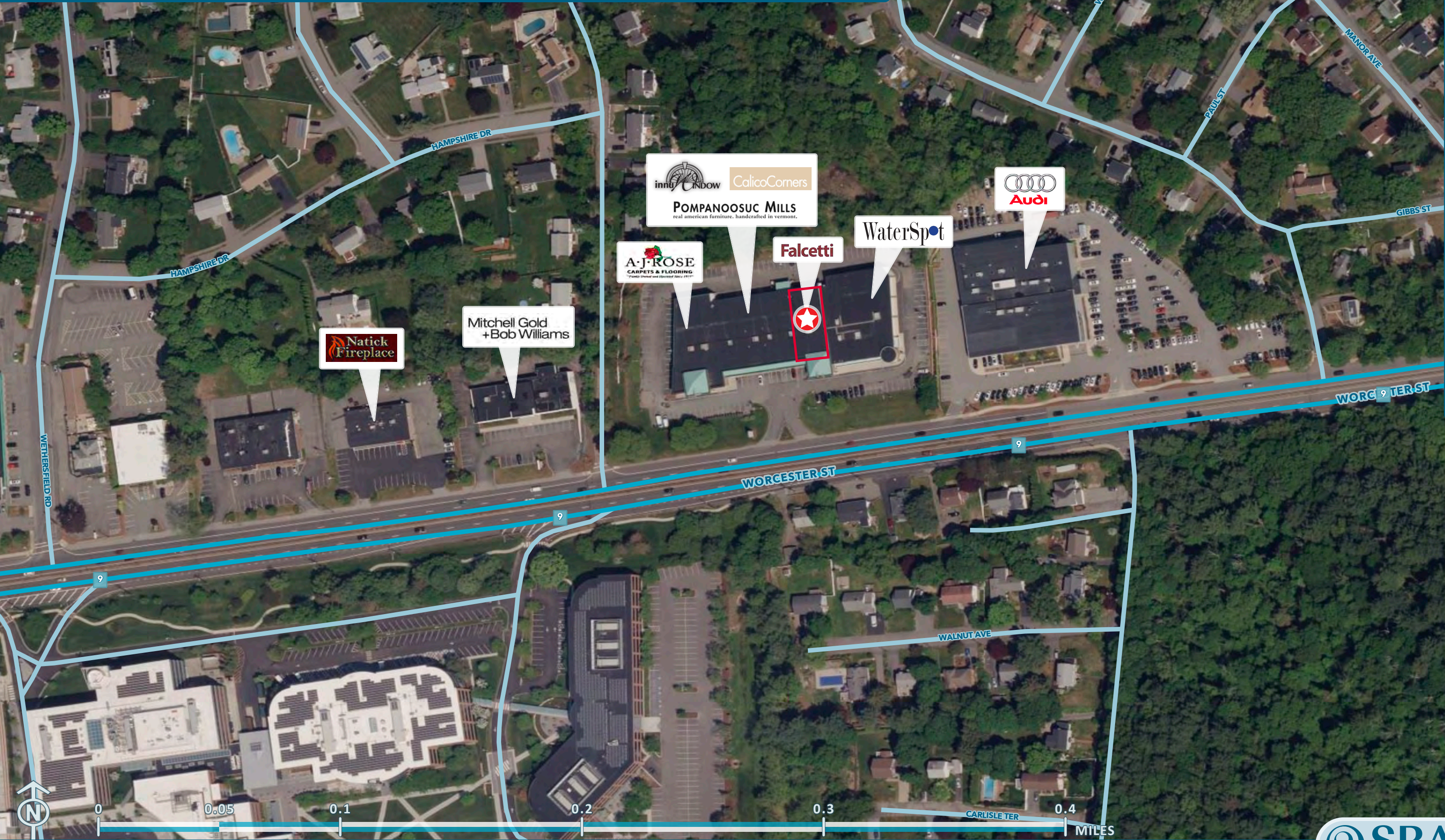
UPDATED: OCTOBER 2024

HOME TOWN CENTER

579 WORCESTER STREET: NATICK, MASSACHUSETTS

AERIAL

HOME TOWN CENTER: NATICK, MA



405 COCHITUATE ROAD | SUITE 301 | FRAMINGHAM, MA 01701 | PH: 508.405.1918 | FX: 508.405.1931 | WWW.SRARETAIL.COM

ALL INFORMATION CONTAINED HEREIN WAS OBTAINED FROM SOURCES DEEMED RELIABLE. NO WARRANTIES OR REPRESENTATIONS, EXPRESS OR IMPLIED, ARE MADE REGARDING THE ACCURACY OF THE INFORMATION CONTAINED HEREIN AND SUCH INFORMATION IS SUBMITTED SUBJECT TO ERRORS, OMISSIONS, PRIOR LEASE ASSIGNMENT, SUBLEASE, AND/OR WITHDRAWAL WITHOUT NOTICE. ALL SCHEMATIC DRAWINGS ARE FOR CONCEPTUAL PURPOSES ONLY! ALL DIMENSIONS, EASEMENTS, BUILDING CONFIGURATIONS, FEATURES, BOUNDARY, ROAD, AND TOPOGRAPHIC LINES ARE ASSUMED TO BE CORRECT, BUT ARE SUBJECT TO VERIFICATION. ALL LOGOS AND TRADEMARKS REMAIN THE PROPERTY OF THEIR RESPECTIVE OWNERS.



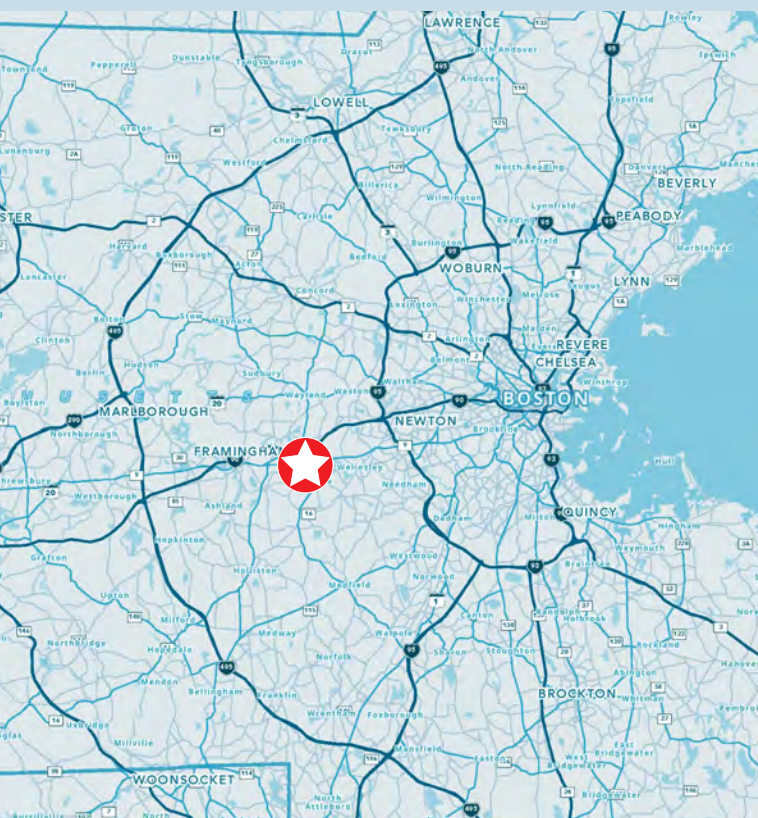
UPDATED: OCTOBER 2024

HOME TOWN CENTER

579 WORCESTER STREET: NATICK, MASSACHUSETTS

FACT SHEET

THE LOCATION



THE STOREFRONT

THE OPPORTUNITY

Welcome to this rare opportunity to lease prime retail space in the **FURNITURE ROW** retail corridor! **Home Town Center** is surrounded by a **DENSE AND AFFLUENT** daytime and residential population, and is home to **upscale home fashion retailers** A.J. Rose, and WaterSpot.

Conveniently located on Route 9, and near the interchanges of I-90, Route 30, and Route 27, **Home Town Center** offers **EXCELLENT ACCESS, VISIBILITY, AND SIGNAGE.**

SPACE DIMENSIONS



6,300
SQUARE FEET

45'-0"
FRONTAGE

DELIVERY INFORMATION



DELIVERY DATE: **ARRANGED UPON LEASE EXECUTION**

DEMOGRAPHICS (20 MINUTE DRIVE)



POPULATION
251,991



AVG HH INCOME
\$216,176



MEDIAN HH INCOME
\$151,823



DAYTIME EMPLOYMENT
184,268

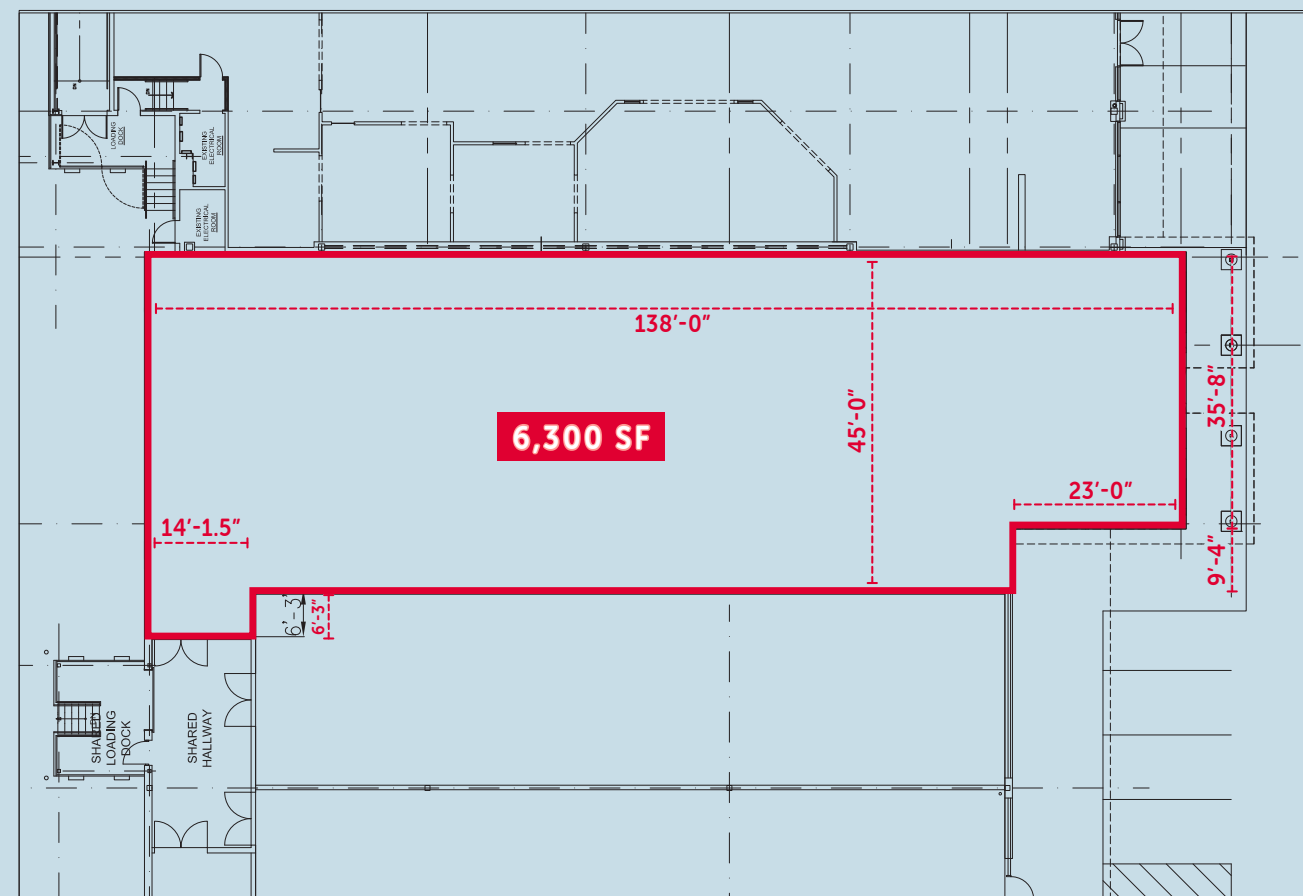
CO-TENANTS



AREA TENANTS



THE SITE PLAN



HOME TOWN CENTER
579 WORCESTER ST.
NATICK, MA

AVAILABLE TENANT SPACE

Date: 5-3-2016
Scale: 1/16" = 1'-0"
Project Number: KBG
Drawn by: KBG

A1.0



405 COCHITUATE ROAD | SUITE 301 | FRAMINGHAM, MA 01701 | PH: 508.405.1918 | FX: 508.405.1931 | WWW.SRARETAIL.COM

ALL INFORMATION CONTAINED HEREIN WAS OBTAINED FROM SOURCES DEEMED RELIABLE. NO WARRANTIES OR REPRESENTATIONS, EXPRESS OR IMPLIED, ARE MADE REGARDING THE ACCURACY OF THE INFORMATION CONTAINED HEREIN AND SUCH INFORMATION IS SUBMITTED SUBJECT TO ERRORS, OMISSIONS, PRIOR LEASE ASSIGNMENT, SUBLEASE, AND/OR WITHDRAWAL WITHOUT NOTICE. ALL SCHEMATIC DRAWINGS ARE FOR CONCEPTUAL PURPOSES ONLY! ALL DIMENSIONS, EASEMENTS, BUILDING CONFIGURATIONS, FEATURES, BOUNDARY, ROAD, AND TOPOGRAPHIC LINES ARE ASSUMED TO BE CORRECT, BUT ARE SUBJECT TO VERIFICATION. ALL LOGOS AND TRADEMARKS REMAIN THE PROPERTY OF THEIR RESPECTIVE OWNERS.



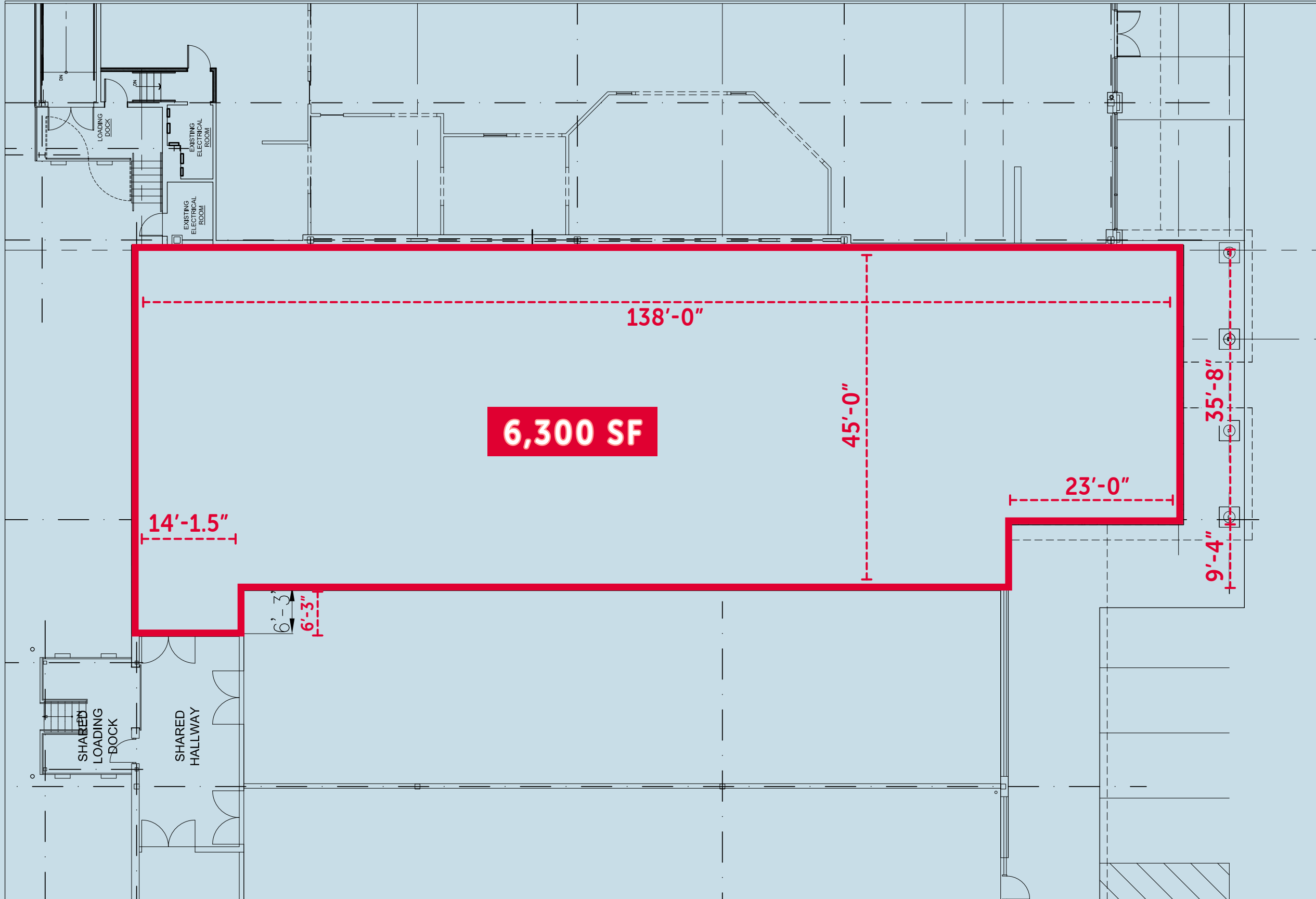
UPDATED: OCTOBER 2024

HOME TOWN CENTER: NATICK, MA

HOME TOWN CENTER

579 WORCESTER STREET: NATICK, MASSACHUSETTS

SITE PLAN



HOME TOWN CENTER
575 WORCESTER ST.
NATICK, MA

AVAILABLE TENANT SPACE

Date: 5-3-2016
Scale: 1/16" = 1'-0"
Project Number:
Drawn by: KBG

A1.0



HOME TOWN CENTER: NATICK, MA

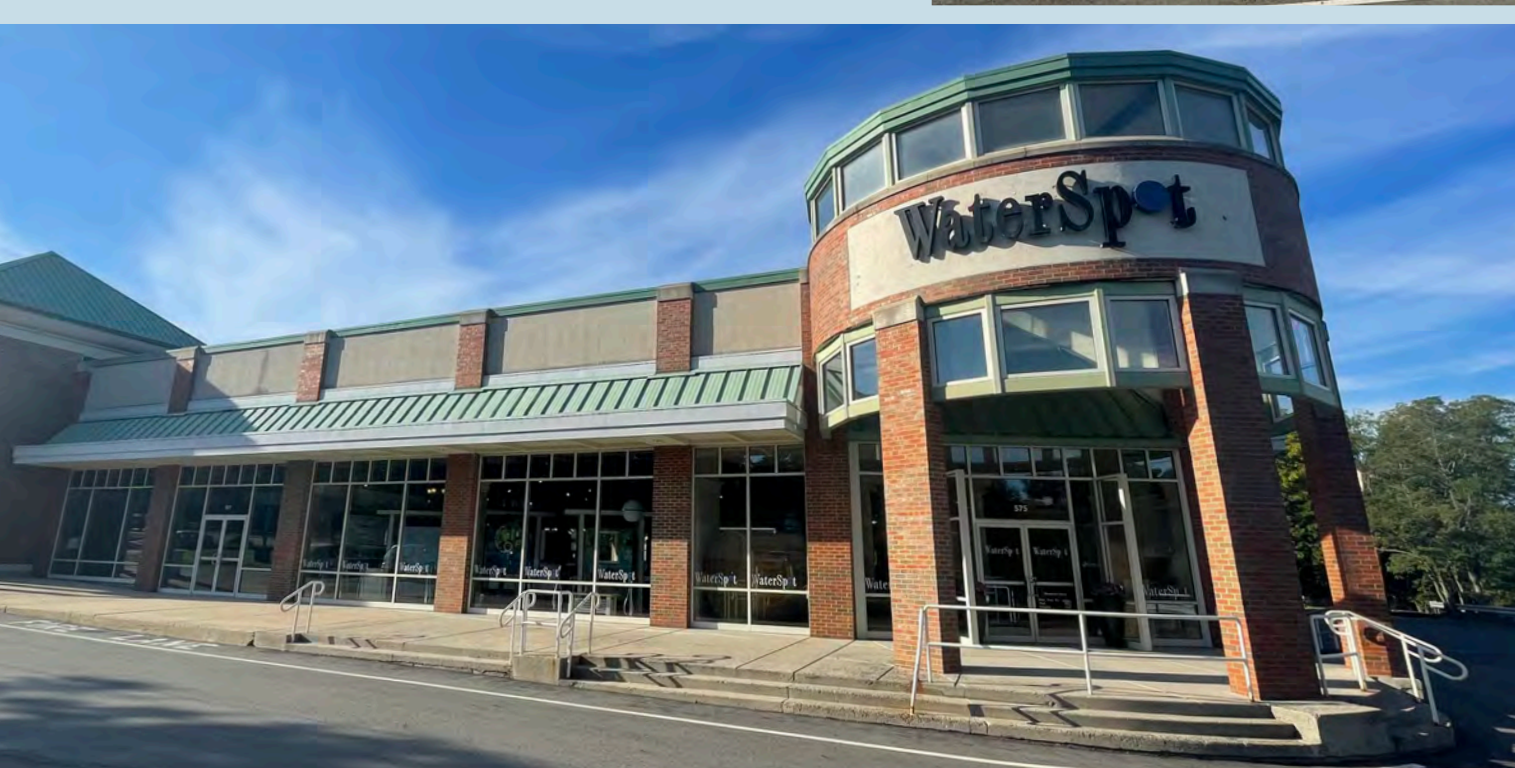
HOME TOWN CENTER

579 WORCESTER STREET: NATICK, MASSACHUSETTS

PHOTOS



HOME TOWN CENTER: NATICK, MA



405 COCHITUATE ROAD | SUITE 301 | FRAMINGHAM, MA 01701 | PH: 508.405.1918 | FX: 508.405.1931 | WWW.SRARETAIL.COM

ALL INFORMATION CONTAINED HEREIN WAS OBTAINED FROM SOURCES DEEMED RELIABLE. NO WARRANTIES OR REPRESENTATIONS, EXPRESS OR IMPLIED, ARE MADE REGARDING THE ACCURACY OF THE INFORMATION CONTAINED HEREIN AND SUCH INFORMATION IS SUBMITTED SUBJECT TO ERRORS, OMISSIONS, PRIOR LEASE ASSIGNMENT, SUBLEASE, AND/OR WITHDRAWAL WITHOUT NOTICE. ALL SCHEMATIC DRAWINGS ARE FOR CONCEPTUAL PURPOSES ONLY! ALL DIMENSIONS, EASEMENTS, BUILDING CONFIGURATIONS, FEATURES, BOUNDARY, ROAD, AND TOPOGRAPHIC LINES ARE ASSUMED TO BE CORRECT, BUT ARE SUBJECT TO VERIFICATION. ALL LOGOS AND TRADEMARKS REMAIN THE PROPERTY OF THEIR RESPECTIVE OWNERS.



UPDATED: OCTOBER 2024